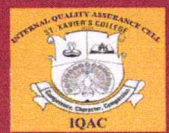


7.1.1 REPORT ON GENDER EQUITY AMONGST STAFF FOR SESSION 2022-2023



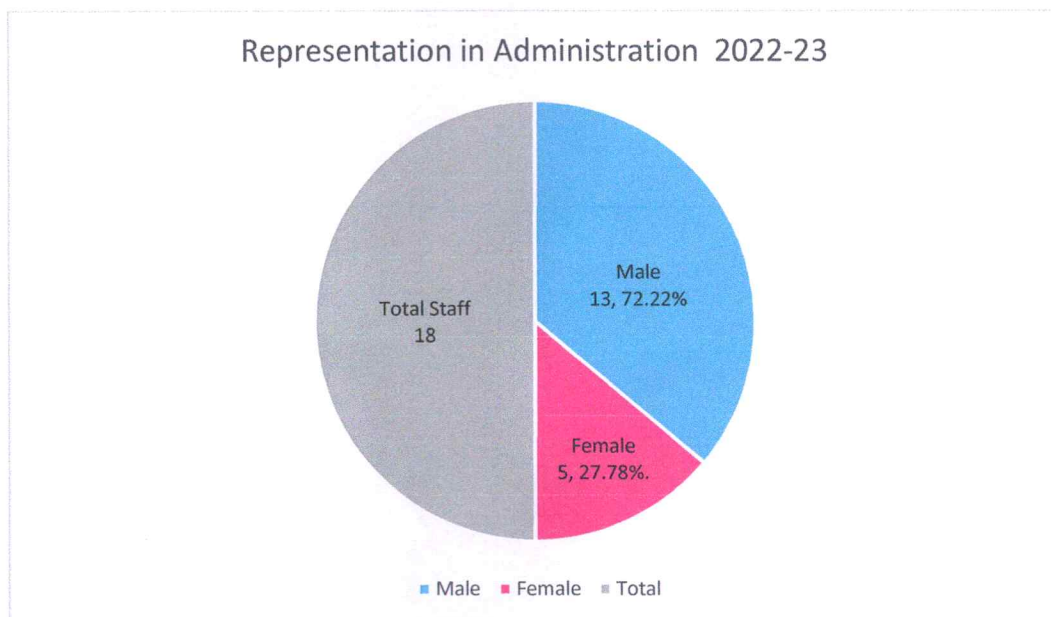
Xavierian Family



I. Gender Equity in Administration (College Managing Committee)

The College Managing Committee at St. Xavier's College Jaipur demonstrates a commendable commitment to diversity and inclusion with approximately 28% female participation. This inclusive approach enriches decision-making processes, fosters broader perspectives, and promotes a culture of equity within the institution.

Session	Male	Percentage (%)	Female	Percentage (%)	Total
2022-23	13	72.22%	5	27.78%	18




Principal
St. Xavier's College, Jaipur
Nevta-Mahapura Road, Jaipur

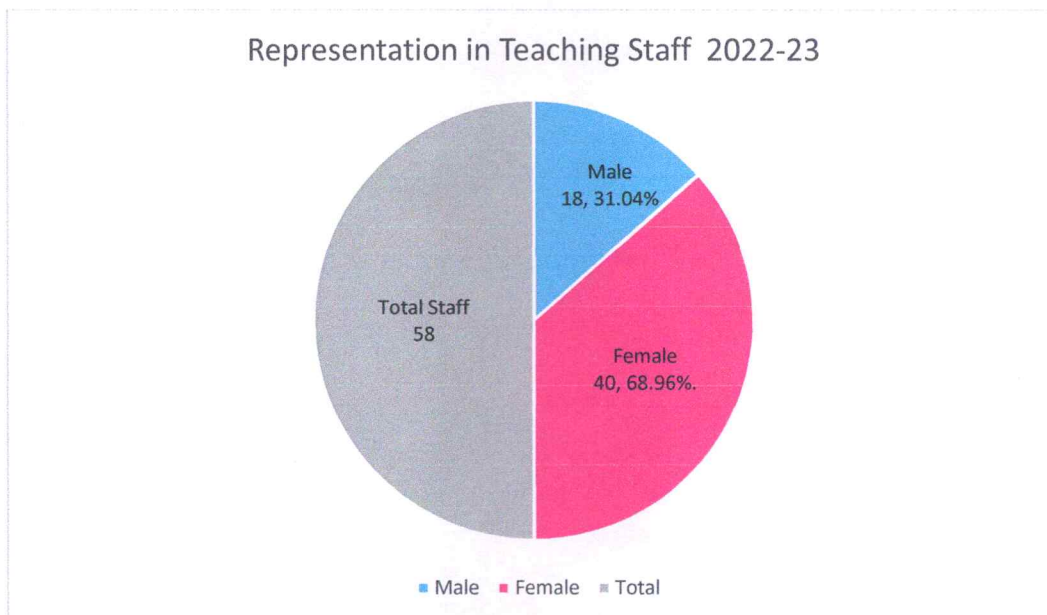
II. Gender Equity Among Staff

Addressing gender equity among staff members is a crucial aspect of promoting inclusivity and diversity within an educational institution like St. Xavier's College Jaipur. Our staff includes teaching and non-teaching (office & maintenance) staff.



1. Gender Equity Among Teaching Staff Members

Session	Male	Percentage (%)	Female	Percentage (%)	Total
2022-23	18	31.04%	40	68.96%	58

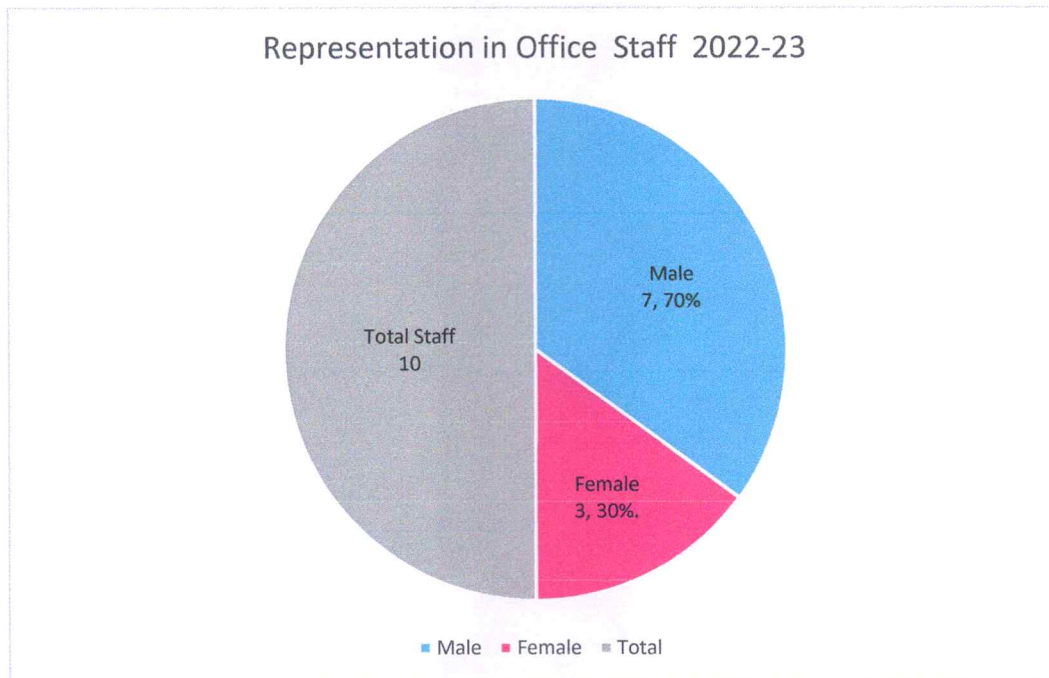


The table and graph show the ratio of female teaching staff is more as compared to the male teaching staff.



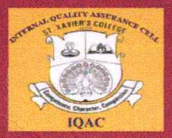
2. Gender Equity Among Office Staff Members

Session	Male	Percentage (%)	Female	Percentage (%)	Total
2022-23	7	70%	3	30%	10



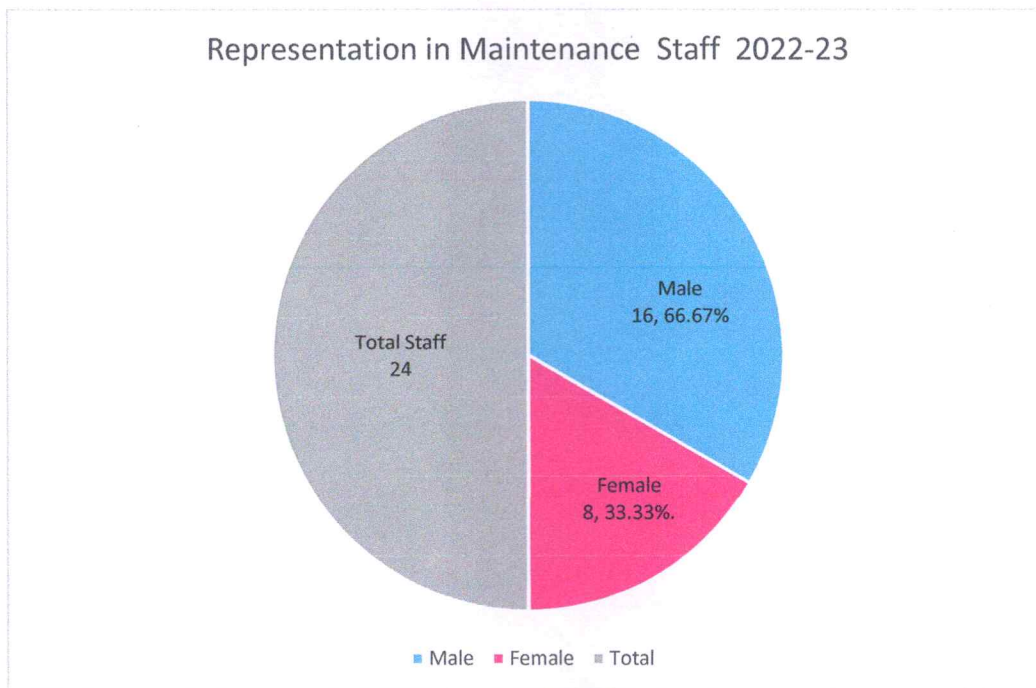
The table and graph show the ratio of female office staff is less as compared to the male office staff.


Principal
St. Xavier's College, Jaipur
Nevta-Mahapura Road, Jaipur



3. Gender Equity Among Maintenance Staff Members

Session	Male	Percentage (%)	Female	Percentage (%)
2022-23	16	66.67%	8	33.33%



The table and graph show the ratio of female maintenance staff is less as compared to the male maintenance staff.

Amrinder
Principal

St. Xavier's College, Jaipur
Nevta-Mahapura Road, Jaipur