

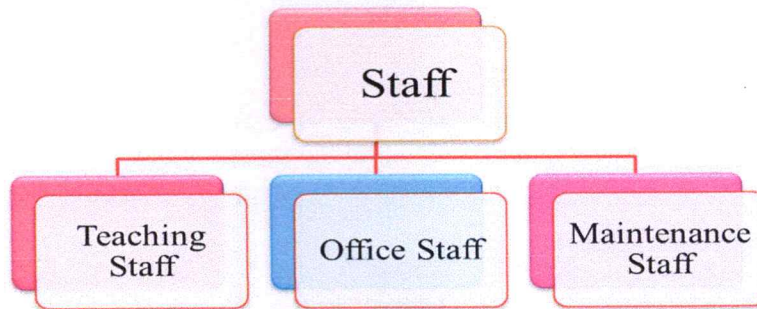
7.1.1 REPORT ON GENDER EQUITY AMONGST STAFF SESSION- 2018-19



Xavierian Family

I. Gender Equity Amongst Staff

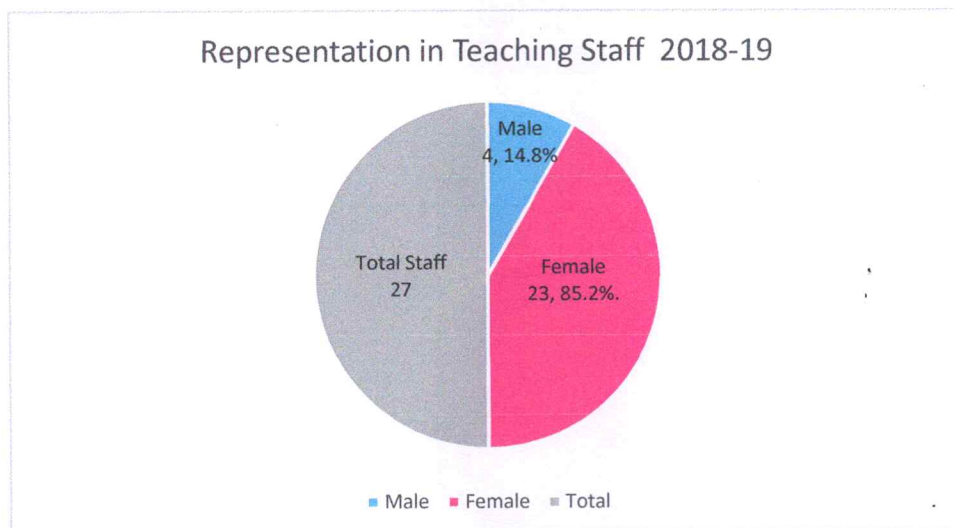
Addressing gender equity among staff members is a crucial aspect of promoting inclusivity and diversity within an educational institution like St. Xavier's College Jaipur. Our staff includes teaching and non-teaching (office & maintenance) staff.



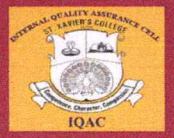
1. Gender Equity Among Teaching Staff Members

Session	Male	Percentage (%)	Female	Percentage (%)	Total
2018-19	4	14.8%	23	85.2%	27

The table and graph show the ratio of female teaching staff is more as compared to the male teaching staff.



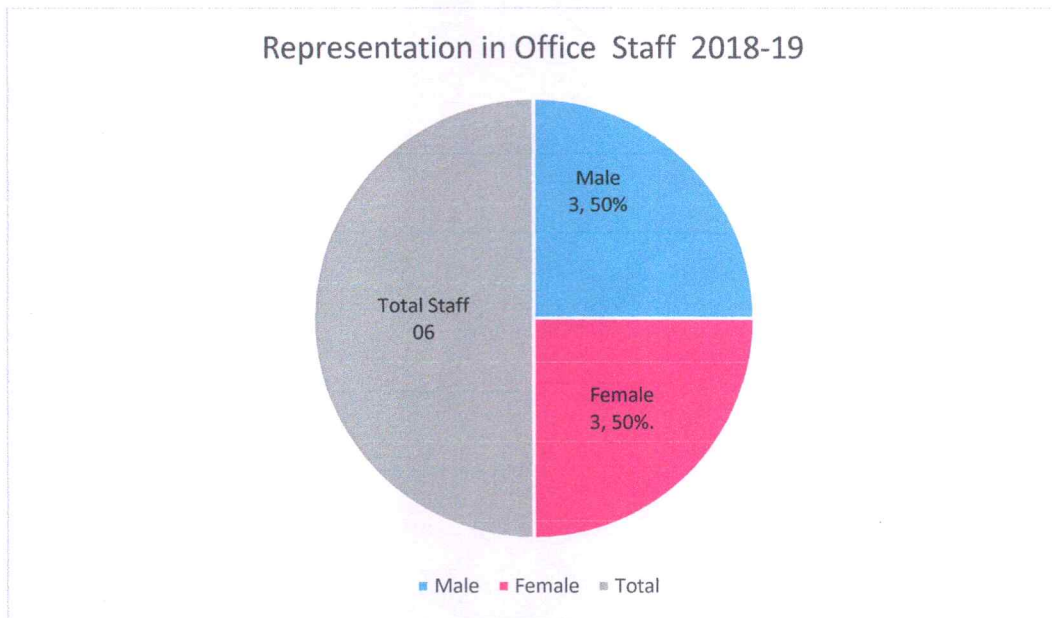
The table and graph show the ratio of female teaching staff is more (83%) as compared to the male teaching staff (17%).



2. Gender Equity Among Office Staff Members

Session	Male	Percentage (%)	Female	Percentage (%)	Total
2018-19	3	50%	3	50%	6

The above table depicts the equal participation of male and female office staff.



The table and graph show the ratio of female office staff is equal to the male office staff.

Principal

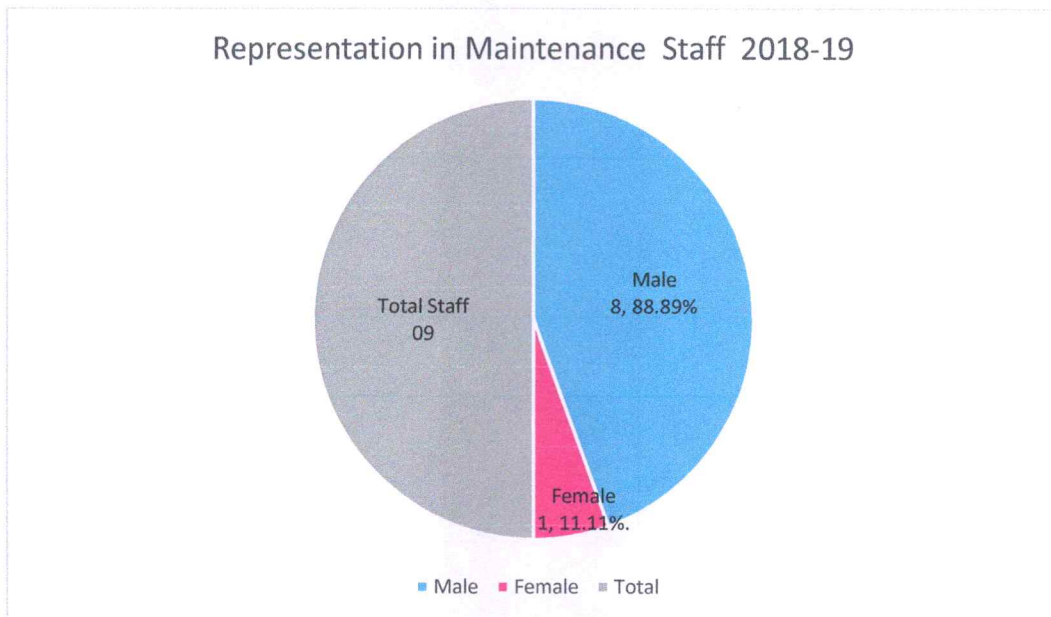
St. Xavier's College, Jaipur
Nevta-Mahapura Road, Jaipur



3. Gender Equity Among Maintenance Staff Members

Session	Male	Percentage	Female	Percentage (%)	Total
2018-19	8	88.89%	1	11.11%	9

The table shows the female percentage is less amongst maintenance staff.




Principal
St. Xavier's College, Jaipur
Nevta-Mahapura Road, Jaipur