

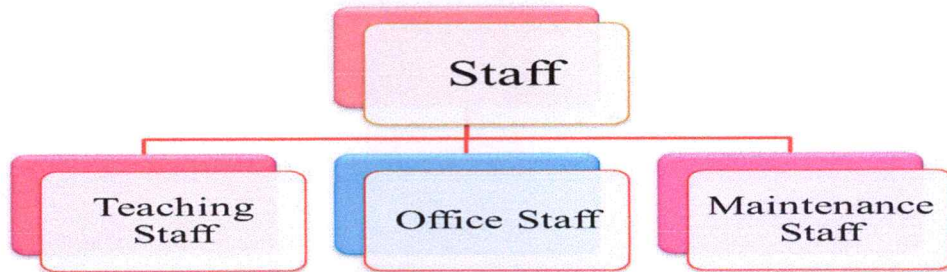
**7.1.1**  
**Report**  
**on**  
**Gender Equity Among Staff**  
**for**  
**Academic Session 2019-20**



**Xavierian Family**

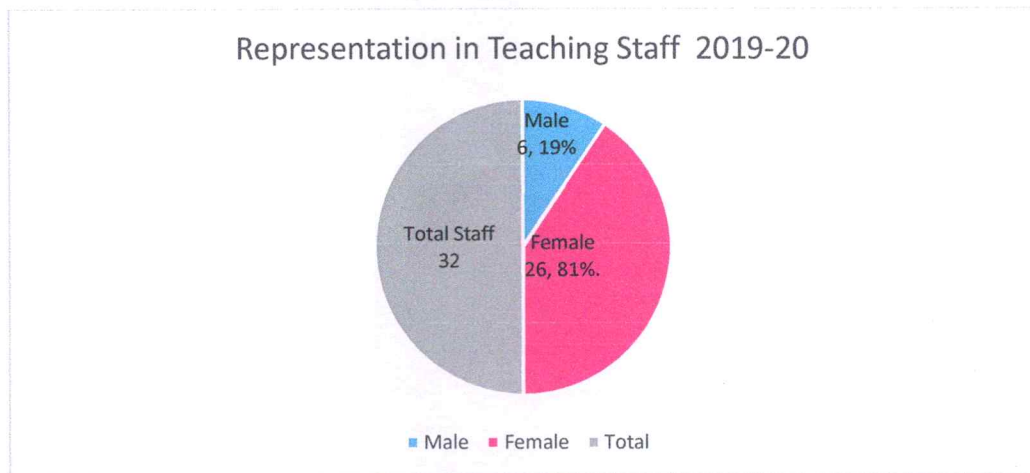
## 1. Gender Equity Amongst Staff

Addressing gender equity among staff members is a crucial aspect of promoting inclusivity and diversity within an educational institution like St. Xavier's College Jaipur. Our staff includes teaching and non-teaching (office & maintenance) staff.



## 1. Gender Equity Among Teaching Staff Members

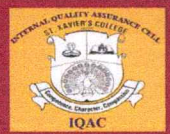
Session	Male	Percentage (%)	Female	Percentage (%)	Total
2019-20	6	19%	26	81%	32



The table and graph show the ratio of female teaching staff is at 81% while the male teaching staff is at only 19%.

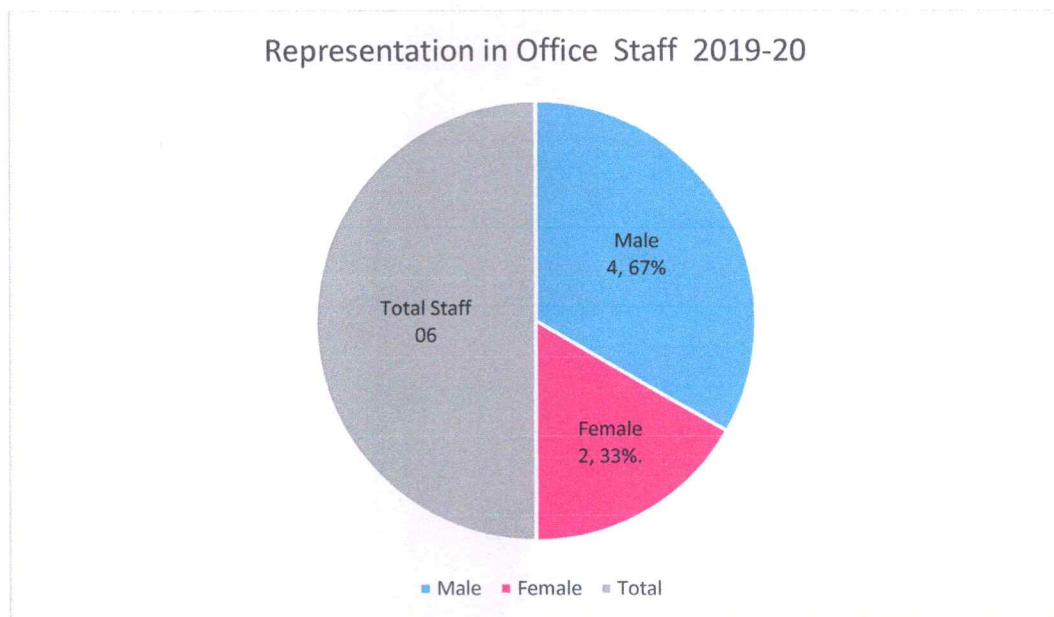
*(Signature)*  
Principal

St. Xavier's College, Jaipur  
Nevta-Mahapura Road, Jaipur



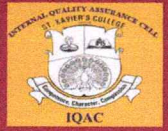
## 2. Gender Equity Among Office Staff Members

Session	Male	Percentage (%)	Female	Percentage (%)	Total
2019-20	4	67%	2	33%	6



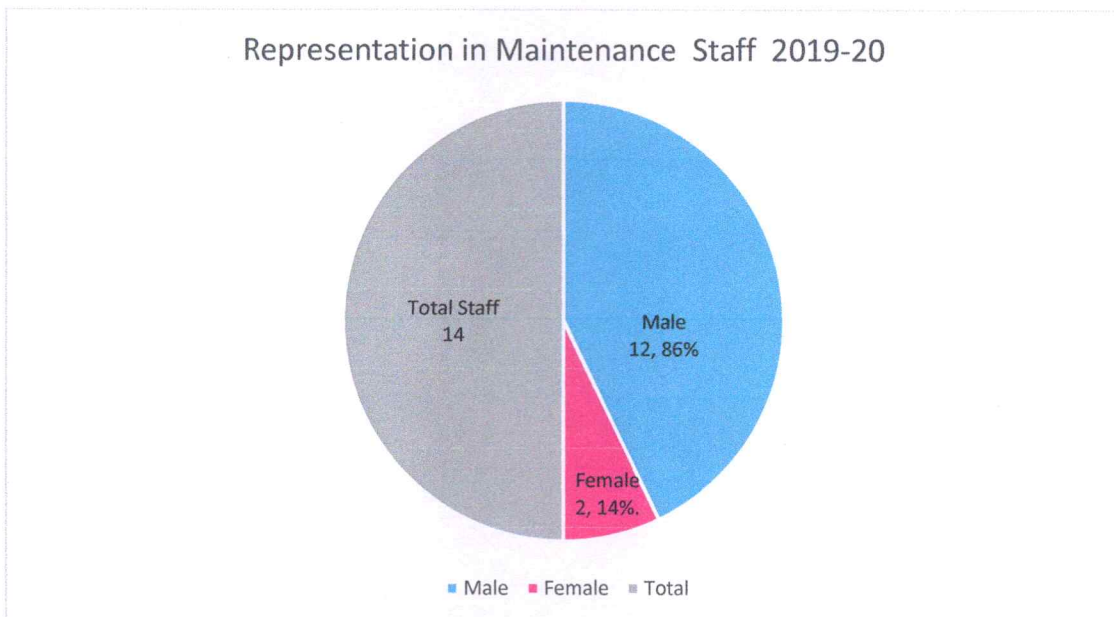
The table and graph show the ratio of female office staff is less as compared to the male office staff.

Principal  
St. Xavier's College, Jaipur  
Nevta-Mahapura Road, Jaipur



### 3. Gender Equity Among Maintenance Staff Members

Session	Male	Percentage (%)	Female	Percentage (%)	Total
2019-20	12	86%	2	14%	14



The table and graph show the ratio of female maintenance staff (14%) is less as compared to the male maintenance staff (86%).

  
Principal

St. Xavier's College, Jaipur  
Nevta-Mahapura Road, Jaipur