

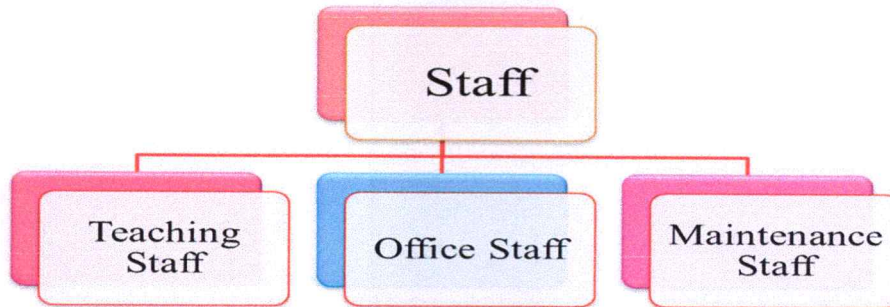


7.1.1 REPORT ON GENDER EQUITY AMONGST STAFF SESSION- 2020-21

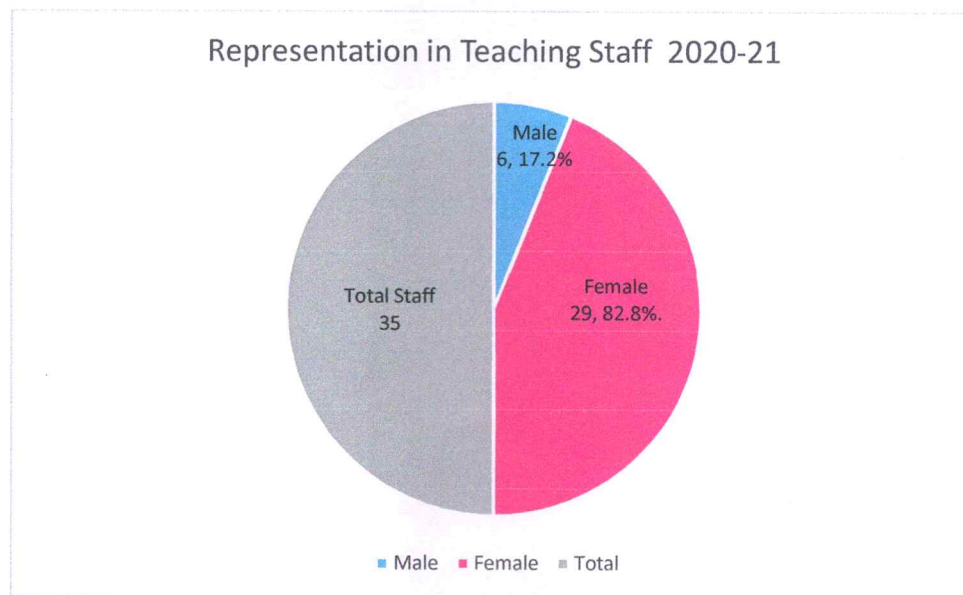


1. Gender Equity Amongst Staff

Addressing gender equity among staff members is a crucial aspect of promoting inclusivity and diversity within an educational institution like St. Xavier's College Jaipur. Our staff includes teaching and non-teaching (office & maintenance) staff.



| Session | Male | Percentage (%) | Female | Percentage (%) | Total |
|---------|------|----------------|--------|----------------|-------|
| 2020-21 | 6 | 17.2% | 29 | 82.8% | 35 |



The table and graph show the ratio of female teaching staff is more as compared to the male teaching staff.

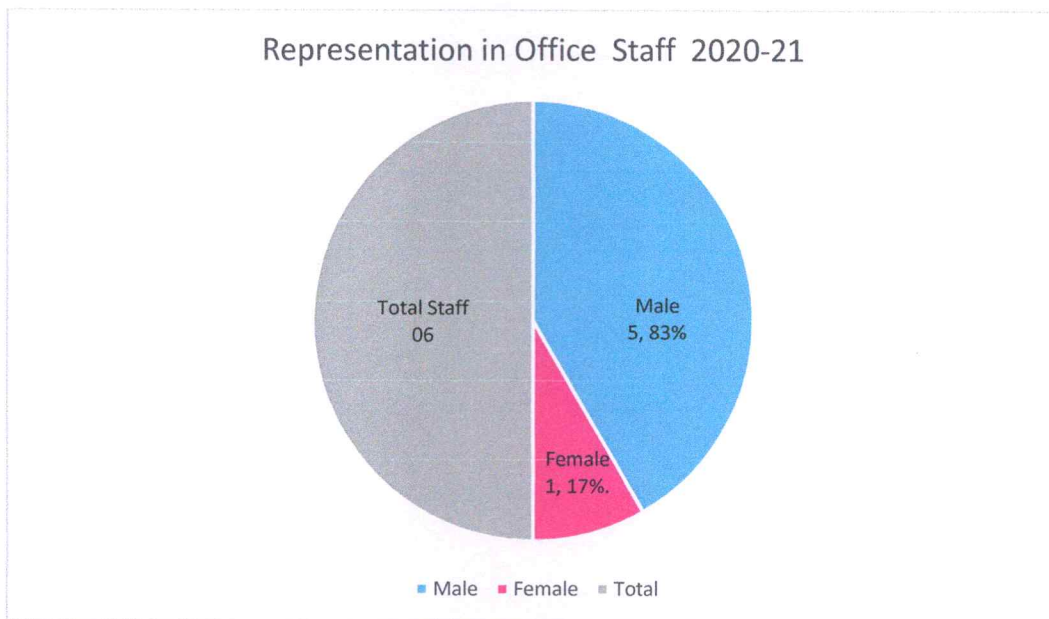
(Signature)
Principal

St. Xavier's College, Jaipur
Nevta-Mahapura Road, Jaipur



2. Gender Equity Among Office Staff Members

| Session | Male | Percentage (%) | Female | Percentage (%) | Total |
|---------|------|----------------|--------|----------------|-------|
| 2020-21 | 5 | 83% | 1 | 17% | 6 |



The table and graph show the ratio of female office staff is less as compared to the male office staff.

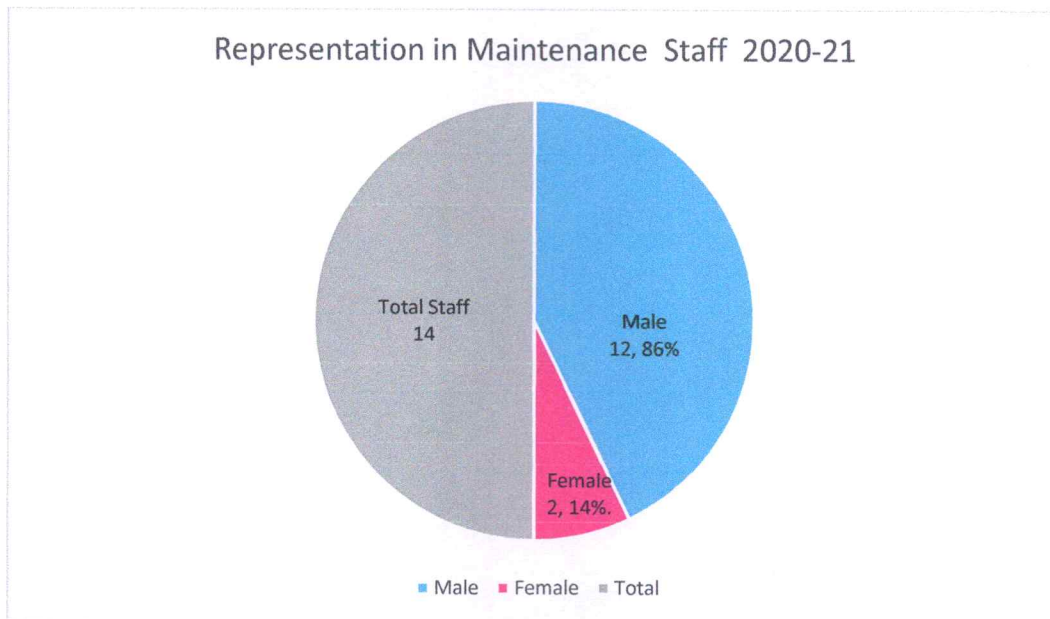
Anil
Principal

St. Xavier's College, Jaipur
Nevta-Mahapura Road, Jaipur



3. Gender Equity Among Maintenance Staff Members

| Session | Male | Percentage (%) | Female | Percentage (%) | Total |
|---------|------|----------------|--------|----------------|-------|
| 2020-21 | 12 | 86% | 2 | 14% | 14 |



The table and graph show the ratio of female maintenance staff is less as compared to the male maintenance staff.


Principal
St. Xavier's College, Jaipur
Nevta-Mahapura Road, Jaipur