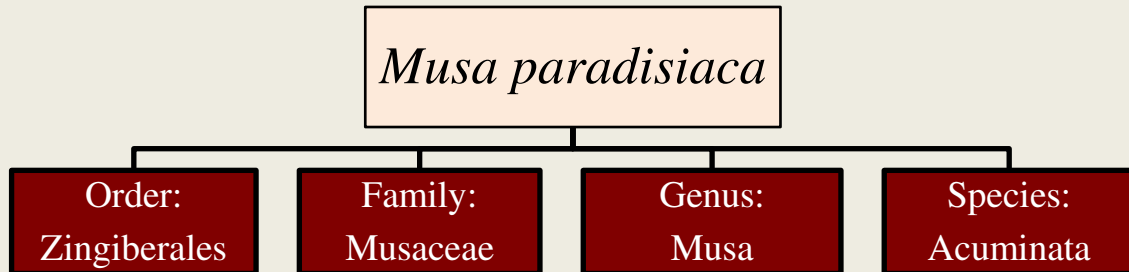


# Banana



## DESCRIPTION

- *Musa × paradisiaca* is the accepted name for the hybrid between *Musa acuminata* and *Musa balbisiana*.
- The x was added to indicate that it is a hybrid of the wild species *Musa acuminata* and *Musa balbisiana*.
- It is native to Southeast Asia.
- Its fruit are used as raw food that rich in fiber and calcium and other plant parts are used in Indian Ayurveda.